

# INSTRUCTION SHEET

## Nexus PCB Jumper Harness (Kit No. 0H6680DSRV)

**UNITS AFFECTED:** 2010 Home Standby models with control panel - 0H6680A or 0H6680B.

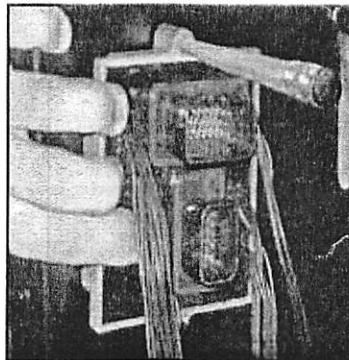
**PURPOSE:** Upgrades a 0H6680A or 0H6680B controller to a 0H6640D controller.

**KIT CONTENTS:**

Generac Part Number	Quantity	Description
020911	2	Screw, M5- 0.8 X 30 mm
049226	4	Washer, lock M5
051713	4	Washer, flat M5
051716	4	Nut, hex M5-0.8 X 12
091526	2	Screw, M5 X 12 mm
0H6680D	1	Control Board, new firmware
0J2438	1	PCB Jumper Harness Assembly
0J34270ST03	1	Adapter Bracket
0K5854	1	Instruction Sheet

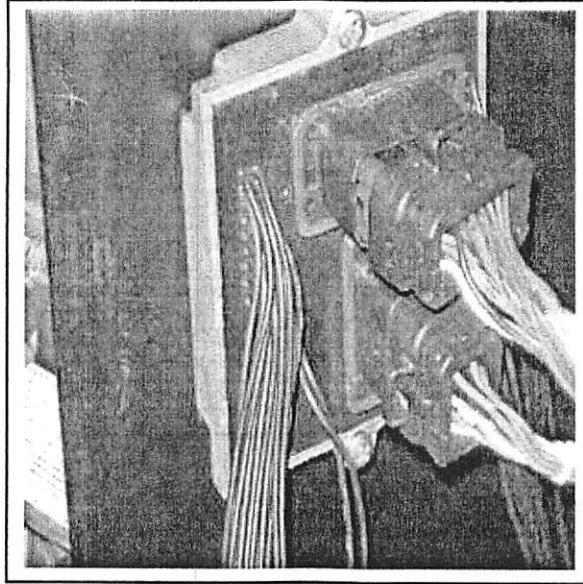
**PROCEDURE:**

1. Unlock and open the top cover.
2. Place the generator in the **OFF** mode.
3. Remove the 7.5 Amp fuse.
4. Remove the generator's front panel.
5. Disconnect the negative battery cable (-).
6. Remove the fasteners and fascia around the control panel.
7. Remove the two screws on the left side of the control panel and the one screw under the panel's front edge.
8. Unplug all connectors from the control panel.
9. Remove the control panel. It will not be re-used.
10. If the generator is **NOT** an 8 kW, the control board is mounted to the firewall under the control panel area. Use the board, itself, as a template for the mounting hole locations. Mark the hole locations with a pencil or punch. See Figure 1.



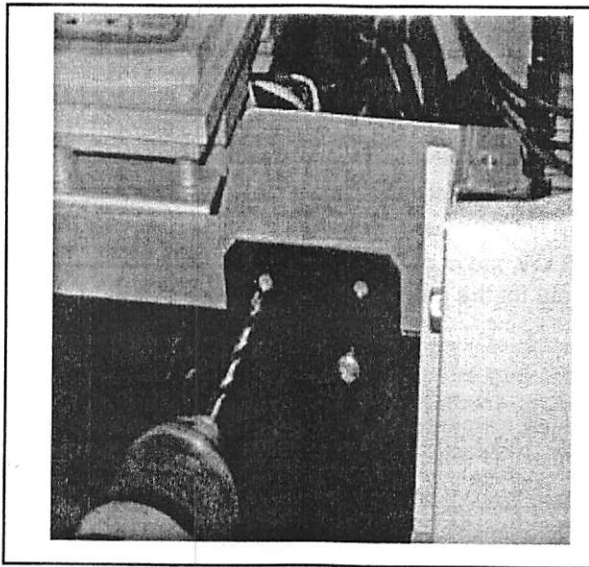
**Figure 1. Jumper Harness Board Assembly**

- 
11. Remove the board and drill two mounting holes using a 15/64" (5.8 mm or "A" lettered) drill bit.
  12. Mount the assembly using two sets of hardware including: 30 mm long screw (020911), flat washer (051713), lock washer (049226) and nut (051716). See Figure 2.



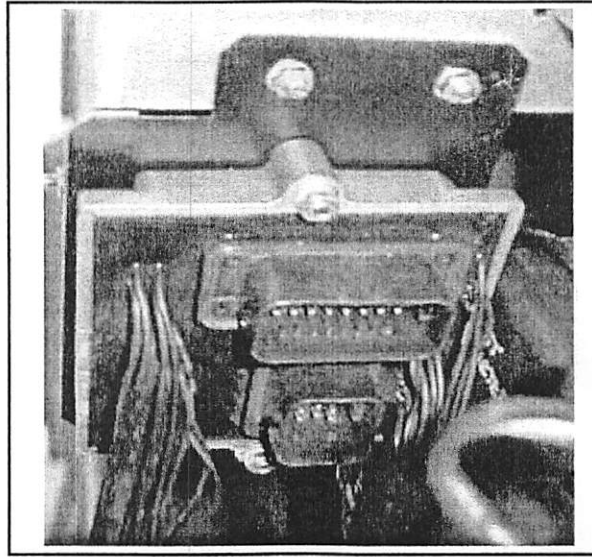
**Figure 2. Board Secured to Wall**

13. If this **IS** an 8 kW generator, mount bracket (0J34270ST03) to rail under control board and attach the board assembly to the bracket.
14. Drill two holes using a 15/64" (5.8 mm or "A" lettered) drill bit. The bracket can be used as a template to locate the hole placement in the approximate area shown. See Figure 3.



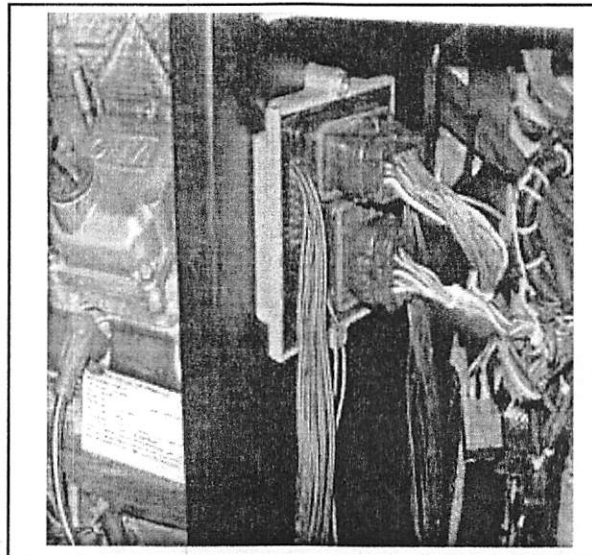
**Figure 3. Drilling Mounting Holes for 8 kW Generator Bracket**

- 
15. Secure the bracket, to the rail, under the control panel using the following hardware: 12 mm short screw (091526), flat washer (051713), lock washer (049226) and nut (051716). See Figure 4. Then mount the board assembly to the bracket with two sets of hardware: including:30 mm long screw (020911), flat washer (051713), lock washer (049226) and nut (051716). See Figure 4.



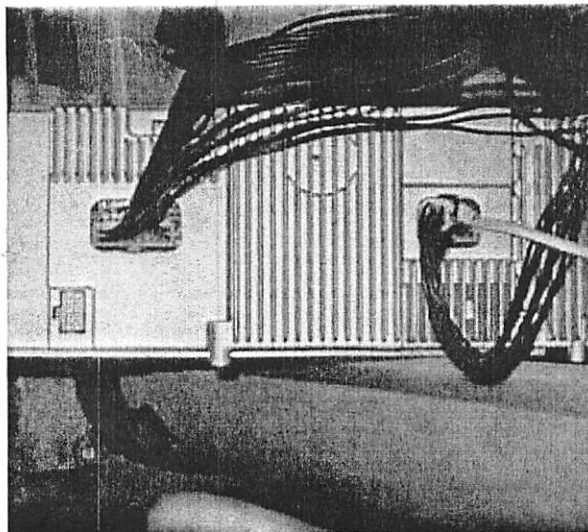
***Figure 4. Bracket and Control Board in place***

16. Plug the two black AmpSeal connectors of the generator wire harness into the board assembly. See Figure 5.



***Figure 5. Installing AmpSeal Connectors into Board Assembly***

- 
17. Plug the remaining connectors, from the jumper harness, into the new control board. See Figure 6.



**Figure 6. Control Panel with Connectors**

18. Secure the control panel using the fasteners that were removed.  
19. Install the control panel fascia removed. Tighten fasteners securely.  
20. Connect the negative battery cable (-).  
21. Install the generator's front panel.  
22. Install the 7.5 Amp fuse.  
23. Place the generator in the **AUTO** mode.  
24. Close and lock the top cover.

Part No. 0K5854    Rev B 10/23/13    Printed in USA  
© Generac Power Systems, Inc. All rights reserved  
Specifications are subject to change without notice.  
No reproduction allowed in any form without prior written  
consent from Generac Power Systems, Inc.

Generac Power Systems, Inc.  
S45 W29290 Hwy. 59  
Waukesha, WI 53189  
1-888-GENERAC (1-888-436-3722)  
[www.generac.com](http://www.generac.com)